

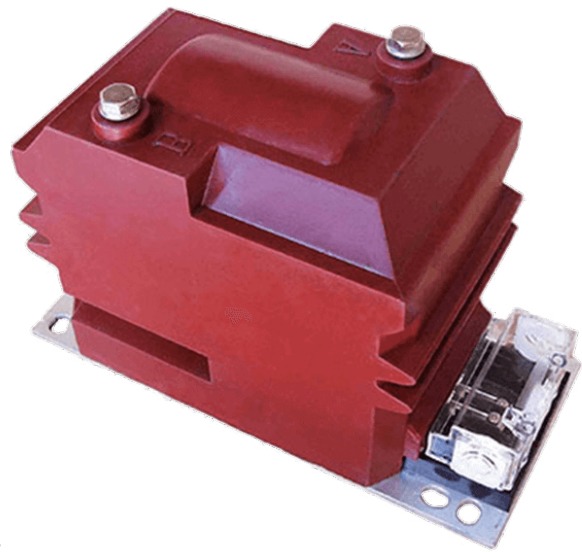
GFJDZ1053-10A

12KV EPOXY-RESIN HIGH EFFICIENT INDOOR POTENTIAL TRANSFORMER

GFJDZ1053-10A High Efficient Indoor potential transformer is used for metering and relaying on 12kV circuits. This product has the characteristics of high precision and large capacity, and can be customized according to customer requirements. It is used by Air insulation cabinet, as protection potential transformer and measurement potential transformer in less than 12KV power system. It was designed with reasonable structure and robust construction. Its limiting thermal Output can reach 200(VA)It has excellent short circuit and thermal withstand capabilities. Strictly Comply IEC60044-2; IEC 61869-1,3; ANSI/IEEE C57.13

Features

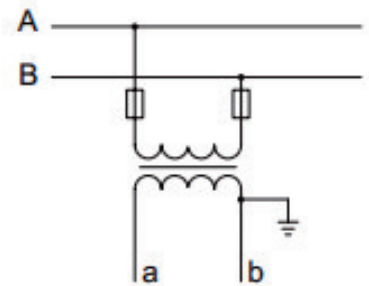
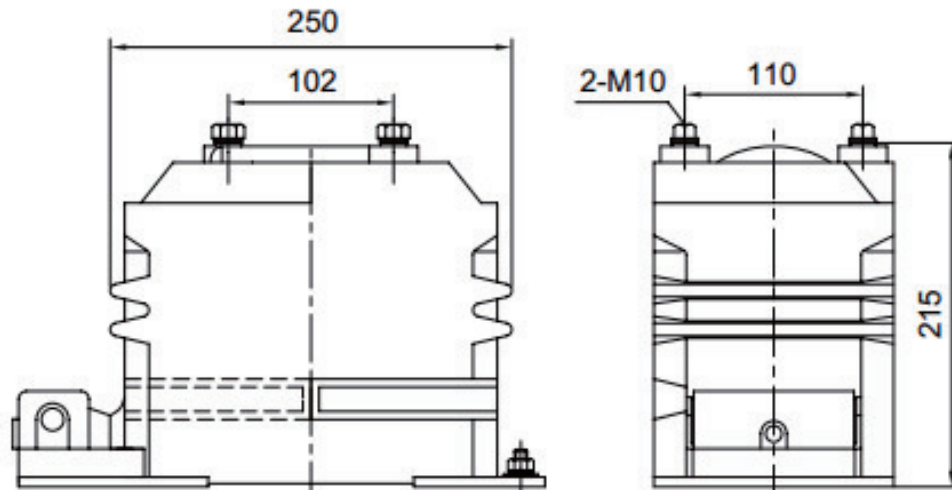
1. Weight:18.5KG;
2. Small size design;
3. Rated voltages up to 12 kV;
4. Accuracy class: 0.2, 0.5, 1, 3, 3P, 6P;
5. Limiting Thermal Output 200(VA);
6. Measuring and protection class using;
7. Rated voltage ratio (KV):10/0.1 6/0.1 3/0.1;
8. Rated basic insulation levels (BIL) up to 75 kV;
9. Reasonable structure and robust construction;
10. Material: High quality silicon steel and Epoxy Resin;
11. IEC60044-2; IEC 61869-1,3; ANSI/IEEE C57.13 standard;
12. Excellent short circuit and thermal withstand capabilities;
13. Convenient installation, suitable for installation in any location;



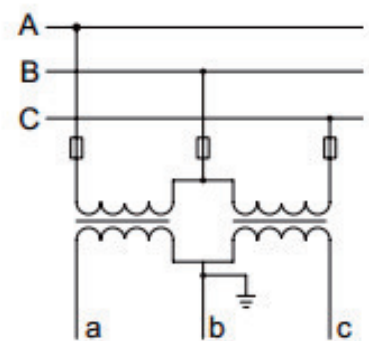
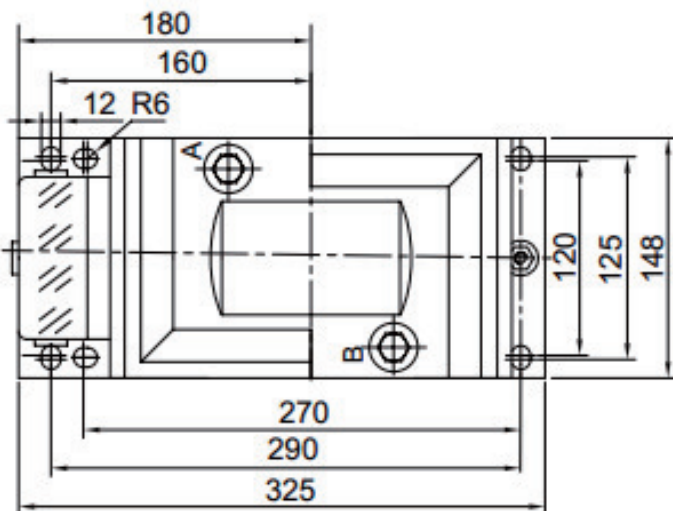
Applications

- | | |
|----------------------------|--------------------------------|
| 1. Rail way; | 2. Coal Mine; |
| 3. Power Plant; | 4. Energy meter; |
| 5. Power Meter; | 6. Power station; |
| 7. MV switchgears; | 8. Distribution system; |
| 9. Air insulation cabinet; | 10. Ring network cabinet; |
| 11. Measuring instrument; | 12. MV Power Quality Analyzer; |

Outline drawing



1P wiring diagram



3P wiring diagram

Parameters

Technical parameters	
Standards	IEC60044-2; IEC 61869-1,3; ANSI/IEEE C57.13
Accuracy Class	0.2, 0.5, 1, 3, 3P, 6P
Rated Voltage	12KV, 11KV, 10KV, 6KV, 3KV
Rated load	≤150VA
Secondary voltage output	100V, 110V, 120V, 220V, 240V

Technical parameters - continued

Rated frequency	50Hz or 60Hz
Cosφ	0.8 (lag)
Phase number	Single
Connection method	Delta
Rated insulation level	12/42/75KV, 7.2/32/60KV, 3.6/25/40KV
Class of pollution	II

Mechanical parameters

Material	Epoxy resin
Weight (kg)	18.5

Operating conditions

Operating temperature	-25°C to +55°C
Daily average temp	<+40°C
Storage temperature	-40°C to +70°C
Altitude	<1000 meters
Condition	No existence of severely begrimed, erosive and radioactive gas in the air. Permission of long-term operation under rated current.

Technical Data

Model	Rated Voltage Ratio(KV)	Accuracy class and Rated output (VA)						Limiting Thermal Output(VA)
		0.2	0.5	1	3	3P	6P	
GFJDZ1053-10A	12/0.12	15	30	60	150	50	50	200
GFJDZ1053-10A	11/0.11							
GFJDZ1053-10A	10/0.1							
GFJDZ1053-6A	6/0.1							
GFJDZ1053-3A	3/0.1							